

Effect of 1800-2100 MHz Electromagnetic Radiation on Learning-Memory and Hippocampal Morphology in Swiss Albino Mice

G KRISHNA KISHORE¹, KV VENKATESHU², NS SRIDEVI³

ABSTRACT

Introduction: With advancing technology the mobile phone with multiple features is used as a multipurpose device and attract people of all age groups. Increased usage of mobile phone raises the question of possible adverse effects on health.

Aim: To assess the 1800-2100 MHz radiation effect on learning-memory and microscopic anatomy of hippocampal Cornu Ammonis (CA3) neurons in mice.

Materials and Methods: A total of 18 albino mice were divided into 3 groups (6 Mice per group). Group-I: Control Group, Group-II: Exposed to Radio frequency-Electromagnetic radiation (RF-EMR) for 30 minutes/day for 3 months, Group-III: Exposed to RF-EMR for 60 minutes/day for 3 months. Followed by the exposure, learning memory was assessed by using Hebb-Williams maze in all the groups. The mice were then sacrificed, brains were dissected out and sections were taken at the level of hippocampus and then stained with Haematoxylin and Eosin for microscopy.

The results were expressed in Mean±SD and analysed by using one-way (analysis of variance) ANOVA followed by LSD (Least Square Difference) test for paired wise data. The p-value<0.05 was considered as statistically significant.

Results: The time taken by the animal to reach the target chamber was significantly increased in Group-III (exposed 60 minutes/day for 3 months), whereas group-II (exposed 30 minutes/day for 3 months) showed no significant changes when compared to Group-I (control group). Microscopic anatomy of hippocampal CA3 neurons in exposed group shows less number of pyramidal cells with darkened nuclei, cytoplasm was vacuolated and cells were scattered.

Conclusion: Exposure to 1800-2100 MHz radiation leads to damage and decrease of neurons in hippocampal region, which alters the learning and memory.

Keywords: Cornu ammonis, Hebb-Williams maze, Radio frequency

INTRODUCTION

The extensive use of Global System for Mobile communication (GSM) mobile phones throughout the world raises the possible adverse effects on human health especially on the Central Nervous System (CNS), the brain. In many countries more than half of the population relies/depend on mobiles for wireless communication and internet data [1]. In 2015, more than 7 billion people were using mobiles in the world, estimating to 62.9% of the world's population. Rapid increase of mobile users in general and specifically upto 80% of youngsters owning a mobile has made communication and technology easier [2].

In this concern, there is a growing interest in scientific community for the potential deleterious effects of Radio Frequency Electro Magnetic Radiation (RF EMR) on the public health, especially much focus on the effects of RF EMR on structural and functional integrity of the brain because the radiation exposure is directly to the head region [3]. In 2006 and 2010, World Health Organisation (WHO) issued a research agenda for high priority research on effects of RF exposure on ageing and neurodegenerative diseases in animals and effects of pre and post-natal RF exposure on development and behaviour in animals [4,5]. The mobile phone releases non-ionising radiation which has low frequency and considered to be safe, but recent studies evidenced that it has an impact on the living tissues especially on the brain which can cause headache, memory loss, heat over the ear, decreased concentration and other cognitive effects [6].

The hippocampus is a part of brain which belongs to the limbic system and is involved in cognitive functions like spatial learning

and working memory. It plays a crucial role in the formation of new memories and it is considered as a sensitive region and is affected by mobile phone radiation. The hippocampus is a "S"-shaped folded structure located on the floor of the lateral ventricle on both the cerebral hemispheres. Hippocampal formation consists of hippocampus proper, dentate gyrus and subiculum. Hippocampus proper is also known as Cornu Ammonis (CA), which consists of CA1, CA2, CA3 and CA4 sub-regions [7].

Studies have found that damage to the hippocampal neurons may lead to impairment of memory and learning, behavioural disturbances and impact on Hypothalamo-Pituitary-Adrenal (HPA) axis [3,8,9]. The present study was undertaken to evaluate the long term exposure effect of mobile phone radiofrequency electromagnetic radiation-4G (1800-2100 MHz) on cognitive functions like spatial learning, working memory and hippocampal morphology in adult swiss albino mice.

MATERIALS AND METHODS

The Experimental study was carried out after the approval of Institutional Animal Ethical Committee (IAEC/PHARMA/SDUMC/2017-18/04). The study was conducted at central animal house Sri Devaraj Urs Medical College, Kolar from November 2017-January 2018, the duration of the study was 3 months.

Animals

Six weeks old healthy male Swiss-Albino Mice were used in this study, the animals were procured from Committee for the Purpose of Control and Supervision of Experiments on Animals (CPCSEA) registered brooders-Invivo Biosciences, Bengaluru.

The Swiss-Albino Mice were kept in polypropylene cages with a temperature of $23\pm 2^{\circ}\text{C}$, humidity $55\pm 5\%$ and 10 hours light, 14 hours dark cycle and free access to standard pellet food and water ad libitum. The experimental animal care was taken as per the Committee for the Purpose of Control and Supervision of Experiments on Animals (CPCSEA) guidelines.

Inclusion and Exclusion Criterion

Male healthy active Swiss-Albino mice with average weight of 20 grams when procured were included in this study. Female swiss albino mice and lesser weight mice were excluded from this study.

Experiment Design

A total of 18 Male Swiss-Albino Mice were taken and they were divided into three groups.

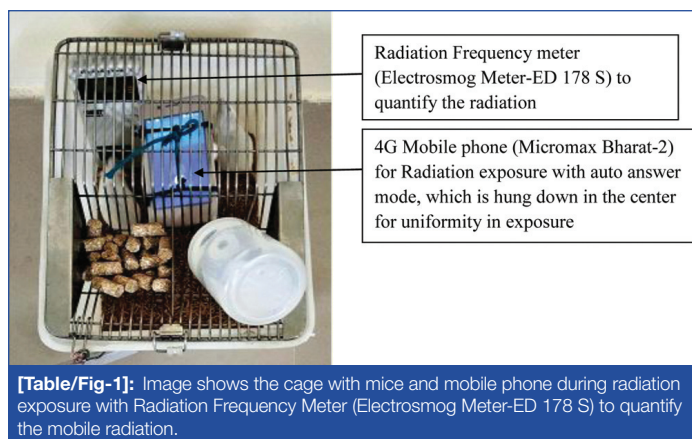
Group I: Control group-consists of 6 mice (non-exposed group).

Group II: 30 minutes exposure group-consists of 6 mice which were exposed to Mobile Phones (MP) RF-EMR for 30 minutes/day for 3 months.

Group III: 60 minutes exposure group-consists of 6 mice which were exposed to MP RF-EMR for 60 minutes/day for 3 months.

Mobile phone: 4G android mobile phones (Micromax Bharat-2 with a Specific Absorption Rate (SAR) of 1.6 Watt/Kg) with same specification and with same mobile network were used in this study, keeping a GSM (2100 MHz) mobile phone in silent with auto answer mode. The mobiles were hung down from the roof of the mice cage and the radiation which they emitted during the exposure was quantified by radiation frequency meter (Electrosmog Meter-ED 178 S) which was kept at the periphery, 1950 MHz of RF-EMR was emitting till the periphery of the mice cage during the exposure, so the similar amount of radiation may affect/enters the mice brain.

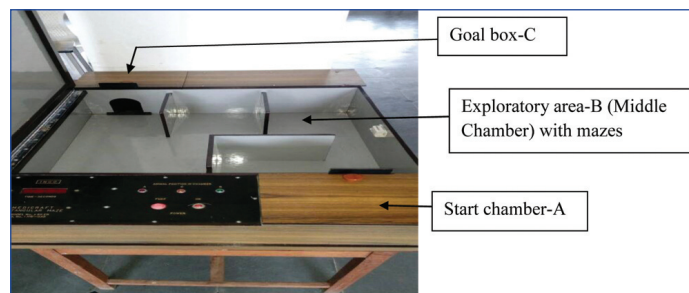
Exposure technique: Three Mice were kept in each cage during the exposure. Animals of group II and III were exposed to 30 minutes and 60 minutes/day for 3 months respectively. The mobile phones were hung down in the center of the cages during the exposure period for the uniformity of the radiation through out the cage [Table/Fig-1].



Hebb-Williams Maze: Hebb-Williams Maze is used to test the spatial learning and working memory of the mice. The principle behind the Hebb-Williams Maze test is "The faster the mice navigates the maze, the better its spatial memory". The Hebb-Williams maze is a square shaped box which measures 60 cm (L) \times 60 cm (W) \times 10 cm (H) walls. It consists of start chamber-A (Animal Chamber) which is attached to the exploratory area-B (Middle Chamber) and a goal box-C, located at the opposite end of the start chamber and contains a small food reward. All three chambers were provided with removable doors to allow the animal to move from one chamber to the next.

After 12 hours of fasting, the mice was placed in the start chamber-A and allowed to enter into the exploratory area-B (middle chamber), once the animal enters into middle chamber the door was closed

to prevent back entry. The time taken by the animal to reach The Reward Chamber (TRC) from the start chamber was recorded. The animals were trained for 3 days (3 trials/day) and the readings were taken at the 4th day. Low scores indicates better memory, while the high scores indicates poor memory in animals [Table/Fig-2] [10,11].



[Table/Fig-2]: Hebb-Williams Maze instrument to assess the spatial learning and working memory in Swiss-Albino mice.

Tissue Processing

After the behavioural analysis the mice were euthanized, perfused transcardially with normal saline and the brains were extracted out, fixed in 10% buffered formalin, dehydrated in ascending grades of ethyl based alcohol like 60%, 70%, 80%, 90% and absolute alcohol, cleared in xylene, impregnated in paraffin wax at 60°C , embedded with the help of L-moulds and then 6 μm paraffin sections were taken using rotary microtome at the level of the dorsal hippocampus to assess the hippocampal CA3 cellular architecture with the help of H and E staining. To prevent the bias, every 5th section was taken and the slides were decoded after the histological assessment. Viable neuronal quantification was assessed with the help of ocular micrometer fixed to light microscope (40X).

STATISTICAL ANALYSIS

The results were expressed in Mean \pm SD and analysed by using one-way ANOVA followed by Least Square Difference (LSD) test for paired wise data. The $p < 0.05$ was considered as statistically significant.

RESULTS

Body Weights of the Mice

The mean body weight of the control group mice was 32.3 grams, 30 min/day radiation exposed mice for 3 months had 31.8 grams and 60 min/day radiation exposed mice for 3 months had 32.7 grams, the mean weight between the three groups didn't show any significant difference.

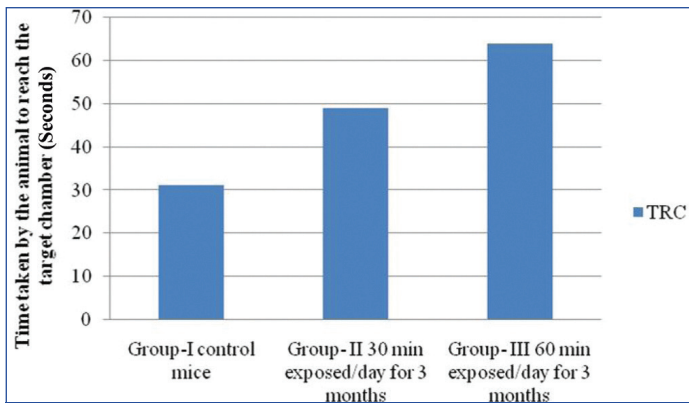
Effect of Radiation on Learning Memory in Hebb-Williams Maze

The time taken by the mice to reach the target chamber from the starting chamber was significantly increased in group II (30 min exposed/day) and group III (60 min exposed/day) compared to group I (non-exposed group).

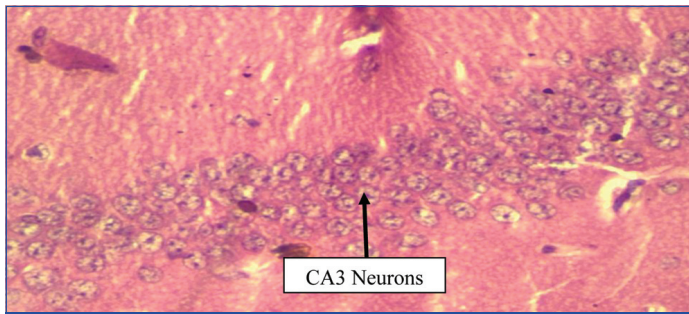
The time taken by the animal to reach The Reward Chamber (TRC) scores in Group I vs Group II (31 ± 15.48 vs 49 ± 17.62 seconds), was not significant ($p > 0.05$); Group I vs Group III (31 ± 15.48 vs 64 ± 22.99 seconds), was statistically significant ($p < 0.05$) [Table/Fig-3].

Microscopic Anatomy of Hippocampal Cornu Ammonis (CA3) Neurons

Histological sections of haematoxylin and eosin stained hippocampal CA3 pyramidal neurons showed marked difference between control group and RF-EMR exposed groups (group II and III). Sections of control group showed 5-6 layers of compactly arranged pyramidal cells which were healthy with clear nucleus [Table/Fig-4]. Group II (30 min exposure for 3 months) showed less number of pyramidal neurons With darkened nuclei (non-viable neurons) which was

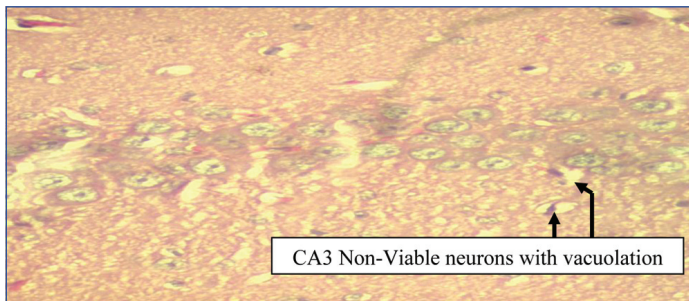


[Table/Fig-3]: Effect of Mobile phone radiofrequency-electro-magnetic radiation (MP RF-EMR) on learning and memory by using Hebb-Williams maze- group I, II and III.

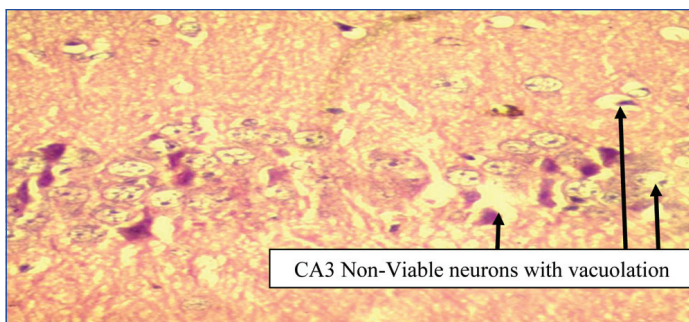


[Table/Fig-4]: Group I (non-exposed)-Control group H and E stained Hippocampal pyramidal normal neurons (Arrow) in high power (40X)

scattered when compared to control group [Table/Fig-5]. Group III (60 min exposure for 3 months) showed very less number of pyramidal neurons with more number of darkened nuclei (more non-viable neurons) with vacuolation in cytoplasm and scattered arrangement of pyramidal neurons when compared to group I and group II [Table/Fig-6].



[Table/Fig-5]: Group-II (30 min exposed for 3 months) H and E stained Hippocampal pyramidal neurons (Arrow) in high power (40X) showed less in number, Non-Viable and scattered with vacuolation in cytoplasm.



[Table/Fig-6]: Group-III (60 min exposed for 3 months) H and E stained Hippocampal pyramidal neurons (Arrow) in high power (40X) showed very less in number, Non-Viable and scattered with vacuolation in cytoplasm.

DISCUSSION

With advancement of technology like 2G to 3G, 3G to 4G in the telecommunication field, the mobile phones are being used for communication, internet data and as multipurpose device. However over-usage of mobiles with advance multiple features has adverse

effects on the brain especially on the hippocampus, which is a sensitive region on the temporal lobe of the brain responsible for spatial learning and working memory, an important cognitive function [7].

In this study, Hebb-Williams maze analysis was used to assess the learning and memory in albino mice exposed to mobile phone radiation frequency and control group [10,11]. In the present study, MP RF-EMR exposed mice took significantly increased time to reach the target chamber in Hebb-Williams maze when compared to the control group, which shows memory retention and memory retrieval is being affected and leads to memory impairment in the mice. Studies have shown that RF EMR exposure will impair the learning and memory, which may be due to neurodegenerative changes and alterations in the morphology of the hippocampus [7,8].

On histological examination, radiation exposed hippocampal CA3 neurons showed less number of pyramidal cells with darkened nuclei (Non-viable), vacuolated cytoplasm and cells were scattered in arrangement. The altered structural integrity in the hippocampus might be the cause for impairment of learning memory. Decrease in pyramidal cell count may be due to inhibition of neurogenesis and this was supported by Odaci E et al., [12]. Bolla SR reported that exposure to 800 MHz mobile radiation for 30 days leads to increased neuronal damage and decreased viable neurons in hippocampal CA3 region [9].

Nittby H et al., reported that exposure to 900 GSM radiation will reduce memory functions in rat, which is similar to our study [1]. MP RF exposure to 900-1800 MHz radiation leads to decrease in nuclear diameter and reduce neuronal density in the hippocampus [13]. Findings on exposure to 50-217 Hz low frequency radiation with television and mobile phone have impact on learning and memory [14]. Fragopoulou AF et al., reported that consolidation and retrieval memory deficits were observed in mice exposed to 9 hr 30 mins for 4 days with 900 MHz non-ionising radiation [15]. Heat shock proteins-HSP 27 and HSP 70 related stress levels are elevated in rat hippocampus exposed to 2450 MHz radiation [16]. A 2.14 GHz Radiation frequency exposure at 4 Watt/kg specific absorption rate increases the body temperature to 1.5°C compared to baseline and upregulates some stress markers like HSP and Heat Shock Transcription Factor (HSF) gene expressions in cerebellum and cerebral cortex [17].

LIMITATION

The outcome of the present rodent study may not extrapolate with human population due to many reasons like Thickness of the skull bone, Weight/Volume of the brain, Specific Absorption Rate (SAR), Duration of exposure, Frequency of radiation and Lifespan of the human population.

CONCLUSION

In this present study, we evaluated the chronic exposure effect of MP RF-EMR- 4G (1800-2100 MHz) on cognitive functions like spatial learning, working memory and hippocampal morphology in adult swiss albino mice. We observed that MP RF-EMR exposed mice took significantly increased time to reach the target chamber in Hebb-Williams maze when compared to the control group. Radiation exposed hippocampal CA3 neurons showed less number of pyramidal cells with darkened nuclei (Non-viable), vacuolation in cytoplasm and cells were scattered in arrangement. The altered structural integrity in the hippocampus may alter the spatial learning and memory.

ACKNOWLEDGEMENTS

We thank Dr. Sarala N Prof., Department of Pharmacology and Incharge-Animal house facility, Sri Devaraj Urs Medical College, Kolar for providing animal house to carry out this doctoral study, we thank Dr. Muninarayana Veterinarian for his suggestions during this study and we also thank Mr. Ravi Shankar, Statistician for his help.

REFERENCES

- [1] Nittby H, Grafstrom G, Tian DP, Malmgren L, Brun A, Persson BRR, et al. Cognitive impairment in rats after long-term exposure to GSM-900 mobile phone radiation. *Bioelectromagnetics*. 2008;29(3):219-32.
- [2] ICT facts and figures 2017-ITU. Printed in 2017. Available from: <http://www.itu.int/en/ITU-D/Statistics/Pages/events/wtis2017/default.aspx>.
- [3] Daniels WMU, Pitout IL, Afullo TJO, Mabandla MV. The effect of electromagnetic radiation in the mobile phone range on the behaviour of the rat. *Metab Brain Dis*. 2009;24(4):629-41.
- [4] WHO Research agenda for radio frequency fields. Published in 2010. Available from: <http://www.who.int/peh-emf/research/agenda/en>.
- [5] 2006 WHO Research Agenda for Radio Frequency Fields. Available from: https://www.who.int/peh-emf/research/rf_research_agenda_2006.pdf.
- [6] Choi YJ, Choi YS. Effects of electromagnetic radiation from smartphones on learning ability and hippocampal progenitor cell proliferation in mice. *Osong Public Health Res Perspect*. 2016;7(1):12-17.
- [7] Afeefy AA, Tolba AMA, Affi OK. A Histological and immunohistochemical study on the effect of mobile phone radiation on the hippocampus of adult and newborn albino rats. *Nat Sci*. 2013;11(8):98-13.
- [8] Narayanan SN, Kumar RS, Potu BK, Nayak S, Bhat PG, Mailankot M. Effect of radio-frequency electromagnetic radiations (RF-EMR) on passive avoidance behaviour and hippocampal morphology in wistar rats. *Ups J Med Sci*. 2010;115:91-96.
- [9] Bolla SR. Effect of mobile phone radiofrequency on hippocampal CA3 neurons. *Int J Anat Res*. 2015;3(3):1216-24.
- [10] Pritchett K, Mulder GB. Hebb-Williams Mazes. *Contemporary Topics by the American Association for Laboratory Animal Science*. 2004;43(5):44-45.
- [11] Nambiar RP, Chowta MN, Nishith RS, Kamath P, Hadigal S. Evaluation of the effects of atorvastatin on learning and memory in wistar rats. *Int J Pharm*. 2015;5(2):408-12.
- [12] Odaci E, Bas O, Kalpan S. Effects of prenatal exposure to a 900 MHz electromagnetic field on the dentate gyrus of rats: a stereological and histopathological study. *Brain Res*. 2008;1238:224-29.
- [13] Mugunthan N, Shanmugasamy K, Anbalagan J, Rajanarayanan S, Meenachi S. Effects of longterm exposure of 900-1800 MHz radiation emitted from 2G mobile phone on mice hippocampus- A histomorphometric study. *J Clin Diagn Res*. 2016;10(8):AF01-AF08.
- [14] Nooshinfar E, Tavirani MF, Khodakarim S. Long term exposure to low frequency electro-magnetic fields of 50- and 217-Hz leads to learning and memory deficits in mice. *Journal of Paramedical Sciences*. 2012;3(3):30-37.
- [15] Fragopoulou AF, Miltiadous P, Stamatakis A, Stylianopoulou F, Koussoulakos SL, Margaritis LH. Whole body exposure with GSM 900 MHz affects spatial memory in mice. *Pathophysiology*. 2010;17:179-87.
- [16] Yang XS, He GL, Hao YT, Xiao Y, Chen CH, Zhang GB, et al. Exposure to 2.45 GHz electromagnetic fields elicits an HSP-related stress response in rat hippocampus. *Brain Research Bulletin*. 2012;88(4):371-78.
- [17] Ohtani S, Ushiyama A, Maeda M, Hattori K, Kunugita N, Wang J, Ishii K. Exposure time-dependent thermal effects of radiofrequency electromagnetic field exposure on the whole body of rats. *J Toxicol Sci*. 2016;41(5):655-66.

PARTICULARS OF CONTRIBUTORS:

1. Ph.D Scholar, Department of Anatomy, Sri Devaraj Urs Medical College, Tamaka, Kolar, Karnataka, India.
2. Professor, Department of Anatomy, Sri Devaraj Urs Medical College, Tamaka, Kolar, Karnataka, India.
3. Professor and Head, Department of Anatomy, Sri Devaraj Urs Medical College, Tamaka, Kolar, Karnataka, India.

NAME, ADDRESS, E-MAIL ID OF THE CORRESPONDING AUTHOR:

G Krishna Kishore,
Department of Anatomy, Sri Devaraj Urs Medical College, Tamaka, Kolar, Karnataka, India.
E-mail: krishnakishore.dev@gmail.com

Date of Submission: **Sep 18, 2018**

Date of Peer Review: **Nov 23, 2018**

Date of Acceptance: **Dec 31, 2018**

Date of Publishing: **Feb 01, 2019**

FINANCIAL OR OTHER COMPETING INTERESTS: None.